

HIGH DEFINITION AIRBRUSH MAKE-UP

Airbrush

Introductory Course
Training Manual

CONTENTS

PAGE	TITLE
3	Airbase Make Up
5	Why Airbrush?
6	Why Silicone?
7	Airbase Products & Equipment
8	Airbase Equipment
9	Step 1: Preparation
	Perfecting Primer Page 9
	Colour Matching Page 11
	Colour Mixing Page 11 - 12
	Concealing Page 13 - 14
15	Step 2: Spray Application
	Foundation Spray Page 15
	Bronze Spray Page 17
	Blush Spray Page 18
19	Step 3: Finishes & Techniques
	Highlighting Page 19
	Contouring Page 19
	Spots & Blemishes Page 20
	Tattoo Coverage Page 20
	Finishing the Look Page 21
22	Airbase Hints & Tips
23	Airbase Maintenance
	Airbrush Break Down Page 23
	Maintenance Aids Page 23
	Cleaning Page 24
25	Airbrush Trouble Shooting
26	Compressor Maintenance
27	Health & Safety Checklist
28	Questions & Answers
30	Product Knowledge Test
32	Practise Sheet
36	Feedback Form

AIRBASE MAKE-UP

Airbase Beginnings

Airbase Make-Up was commissioned by Judy Naaké from St.Tropez self-tan and designed by Oscar nominated make-up artist Anni Buchanan. The brief for the product was to produce a professional silicone based make-up perfect for High Definition TV and film, yet also perfect for occasion make-up such as weddings and for consumers to use at home.

The result of Anni's hard work and Judy's investment led to the birth of Airbase, a make-up that is easy to apply and gives a smooth, long lasting finish.

Airbase System

There are 10 shades of colour in the system: 7 x Foundation shades, 2 x Blush shades and 1 x Bronze shade, each of which are supplied in dropper bottles. A specifically formulated Airbase Perfecting Primer is used to prepare the skin prior to application.

A complete Airbase System includes a specially selected Make-Up Airbrush and a compact Airbase Compressor designed to spray at the required pressure. Extra products and equipment are also available.

THE AIRBASE MAKE-UP RANGE OF PRODUCTS INCLUDES:

Airbase Make-Up

- Perfecting Primer
- 7 x Foundations
- 2 x Blush
- Bronze
- Satin Eyeshadow Palette
- Pearl Eyeshadow Palette
- Concealer Palette
- Corrector Palette
- Lip Palettes
- HD Micro Powders
- Mascara – Growth Enhance with Capixyl
- Mascara – Long Wear

Airbase Equipment

- Airbase Foundation Brush
- Airbase Micro-Fibre Cleansing Mitt
- Airbase Shading Pad
- Airbase Thinner and Cleaner
- Airbase Compressor
- Airbase Airbrush
- Rechargeable Battery Pack
- Airbrush Pressure Adjuster
- Airbase Make-Up Case
- Ultra Sonic Cleaner
- Brush Cleaner
- Hand Sanitiser



PRO PACK PLATINUM



WHY AIRBRUSH?

The spraying of a product onto the skin has several benefits for both the client and the make-up artist and has become the choice of Hollywood celebrities, film and TV make-up artists over the past few years. Airbase is used by Sky, on the movie Life of Pi and on the stage production of Rock of Ages.

Tiny Particles

Airbrushing a product atomises it, breaking the particles down to tiny beads invisible to the naked eye. This method gives a fine and smooth application without any brush or sponge marks. It is the tiny particles that make it perfect for HD TV and Film.

Flawless Finish

When you couple airbrushing with silicone, the result is an absolutely flawless finish. The fine application enhances the skin, giving a glow, rather than completely masking the skin. This allows for a stunning, dewy natural finish which can be built up if necessary.

Non-Clogging

Airbrushing helps to prevent the clogging of pores. When we spray the product, the fine application sits on top of the skin and does not penetrate into the pores. When we brush a product, the product is forced into the skin and pores. The spray method also helps the product last longer.

When product is in the pores it is more likely to 'move' as the skin secretes thus pushing the make-up out.

Hygiene

Airbrushing is the preferred method of application for the Campaign for Safe Beauty. Airbrushing is a hygienic application with minimal touching of the skin reducing the risk of cross contamination.



WHY SILICONE?

Silicone in Airbase

Airbase is different from many other products on the market as it is silicone based - a key selling point of the brand. Cyclomethicone, a silicone, is the first ingredient on the bottle and ensures Airbase gives durability, a perfect coverage and a natural look that will last all day. Silicone is used in the most prestigious foundations on the market as it gives a wonderfully natural finish.

Silicone is used in Airbase for the following reasons:

1. Durability

Silicones are known for their heat resistance and this property is extremely useful within make-up. The silicone stands up to the intense heat of studio lights and the heat generated on a hot summers day.

2. Natural Finish

The coverage given by silicone means that only a light coat is needed. There is no need for a heavy application. Its light-diffusing properties and the dewy finish it gives, makes it the most crucial ingredient in the Airbase Make-Up formula.

3. Easy to Correct

Small errors are inevitable and with water based foundations, these can not be corrected as the make-up dries on the skin instantly. Silicones are moveable and therefore mistakes can easily be corrected with the Airbase Foundation Brush. If top ups are desired; these can be blended seamlessly.

4. Luxurious Feel

Consumers love silicone because it feels so light on the skin. As it does not clog the pores, it allows the skin to breath.

In Summary Silicone:

- Ensures durability;
- Gives a natural finish;
- Is easy to blend;
- Is heat and water resistant;
- Does not clog pores when sprayed;

AIRBASE PRODUCTS & EQUIPMENT

What You Need

Airbrushing: to perform an Airbase Make-Up application you need the following items to hand:

- Airbase Airbrush and Compressor
- Full set of Airbase products
- Airbase Airbrush Cleaner
- Micro-Fibre Cleansing Mitt
- Hair Clips
- Foundation Brush
- Box of Tissues
- Tooth Picks (or cocktail stick or similar)
- Airbase Hand Sanitiser
- Airbase Concealer Palette



The SP-35 Airbrush and AC-25 Compressor have been selected as the best equipment with which to apply Airbase Make-Up. Set up is extremely simple and can be done by connecting the air hose to the compressor and the airbrush.

The compressor is powered using mains electricity. Simply insert the power cable into the compressor and plug in at the mains. To turn the compressor on press the red button on the front of the machine.

Compressor Pressure

The AC-25 Compressor that we use with the Airbase system is manufactured to spray at 6-10psi. This is approximately the right pressure that we should apply make-up at.

Adjusting Pressure

Pressure can be adjusted using the pressure adjuster available from Airbase. This handy tool is connected between the hose and the airbrush. It is also referred to as a 'Bleed Valve' as it bleeds air out of the system so that there is reduced pressure when spraying. Maximum pressure of the Airbase compressor is 10psi. The Pressure Adjuster reduces this and gives added control when working around the eyes and contouring.



AIRBASE EQUIPMENT

Operating the Airbrush

- Remove the cup cover from the airbrush. This is pushed on NOT screwed
- Turn the compressor on so that air is flowing to the Airbrush

The Airbase SP-35 Airbrush is dual action gravity feed airgun. The cup is set directly on top of the airbrush. The colour flows down from the cup and through the body of the airbrush. This is the best type of airbrush for cosmetic work. When you press the trigger down, only air is released from the airbrush. The harder you depress the trigger, the more air will be expelled. **Put your hand in front of the airbrush to feel this.**

To introduce product you must first press the trigger down to release air and then pull back to release product. The more you pull back on the trigger, the more the colour will flow. To stop the flow of colour continue to depress the trigger and move it forward to reduce the colour flow but still continue to expel air. This will help to remove any last traces of product and to minimise the risk of a blockage.

Hold the airbrush in a way that is comfortable for you with your index finger (first finger) on top of the trigger.



Put a few drops of Foundation 1 into the airbrush. Hold a tissue or piece of paper about 5 - 6 cm (slightly more than thumb length) away from the airbrush and point the front of the airbrush at the tissue.



Push the trigger down to release air and then pull the trigger back towards you using your index finger. Product will spray into the tissue.



Practise drawing some straight lines and circles. Put the tissue down if you find it easier.



TIP: Always remember to start on air and finish on air.

Nb. At the back of this training manual you will find a grid and training circles for you to practice your airbrush control. If performing more than two applications a day you must learn to use your thumb to control the trigger.

STEP 1: PREPARATION

Airbase Make-Up Client Preparation

- Using hair clips, pin back the clients hair
- Make sure all make-up is removed by gently cleansing the skin using a micro fibre mitt. Simply run under warm water and wipe gently over the client's face.
- If required apply a light application of moisturiser containing a Sun Protection Factor (SPF). Always moisturise dry and mature skins.
- Blot the face with a tissue to remove excess moisturiser.

Airbase Perfecting Primer

Airbase Perfecting Primer intensively moisturises the client's skin and contains platinum to enhance the acceptance of moisture by the skin. Developed by the very best laboratory, with scientifically advanced Swiss skin care this Primer contains the best anti-ageing ingredients while maintaining its ability to help us prepare the skin for the camouflaging of imperfections.

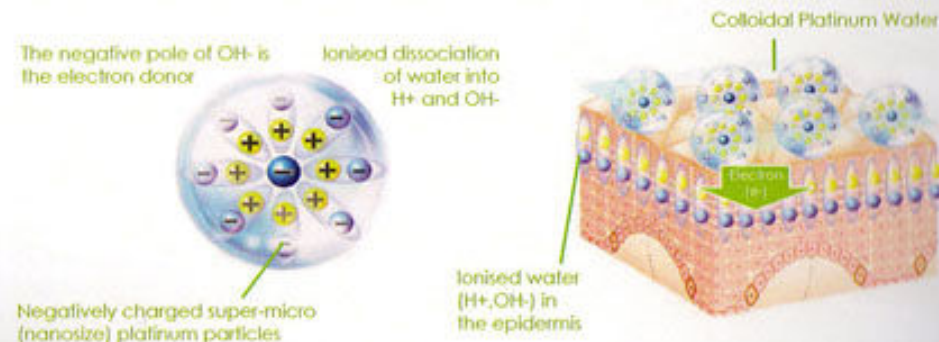
Perfecting Primer is suitable as your 'First Base' on clean skin for normal and oily skins whether male or female. On dryer and more mature skins use over a high quality oil free moisturiser. The client will feel soft, smooth skin after application.

Platinum Technology

Platinum plays an important part in the Perfecting Primer in ensuring the deep hydration.

Negatively charged Colloidal Platinum maintains the electrical balance in the skin and moisturises and protects the epidermis with an Anti-oxidant action (wrapping around skin cells to protect them; imagine preventing a cut apple from going brown).

The negative ions of the platinum re-align water molecules to re-charge the electrical balance in the skin. This realigns the cells so they sit in one direction and thus accept moisture more readily as shown in the diagram.



STEP 1: PREPARATION

Perfecting Primers Key Ingredients

Platinum Powder

Nanosized particles of negatively-charged platinum metal. It is an excellent electron donor and thus helps maintain the electrical balance in the skin. It moisturises and protects the epidermis and has an anti-oxidant action.

Silicone

Feels as light as silk, it minimises imperfections and lines. It gives a perfect finish to the make-up and helps it stay perfect all day. It gives a bright, fresh look to the skin, provides a silky, non-greasy skin-feel. Furthermore, it absorbs skin sebum and diffuses reflected light.

Hyaluronic Acid

Fills in fine lines to give a soft focus effect. It strengthens the skin giving it hydration and elasticity.

Aloe Barbadosis Leaf Juice

Aloe vera has renowned soothing, moisturising, purifying and regenerative virtues.

Why use Airbase Perfecting Primer?

Airbase Platinum Primer improves the look of skin as it softens the appearance of pores and lines. It gives the make-up a more perfect finish and makes it last longer and should be used on all Airbase Make-Up applications, regardless of age or skin type.

Why is no SPF included in the product?

You apply 2-3 drops of primer, this amount could not contain enough SPF to be effective and if you put too many ingredients (additions) into a primer it loses its ability to smooth.

To Apply

Use one-two pumps of Perfecting Primer and spread quickly with the fingertips over the entire face. Be careful when applying near the eye area.

When you are confident the face has a light covering of Perfecting Primer, you are ready to begin the make-up application.

TIP:

This fragrance free Perfecting Primer can be applied to face after the daily skincare routine and before make-up. Make sure your client takes a bottle home!

STEP 1: PREPARATION

Colour Matching

The Airbase system is designed for easy colour matching. All skin tones from light Caucasian to very dark skin tones can be achieved using the 10 colour shades within the range.

To perfectly match the colour you can either use your eye and knowledge of the product or apply a little to the jawline.

It may be that you need to mix some of the foundations together to achieve the perfect colour match. You can test the colour that you have created on the skin using your fingers or the Airbase Foundation Brush. Place the test patch just below the jawline to ensure that you have matched the skin tone perfectly.



TIP:

Add blush to warm sallow skin or Bronze to darken a skin shade. If a skin contains 'yellowy tones' you may wish to add a drop or two of Foundation Number One.

Colour Mixing Tips

Colour mixing is easy to do with Airbase. The more that you practice, the more experienced and confident you will become. The tips on the table are designed as a guideline to get you started. It might be that you come across your own mixing formula to perfectly suit you and your clients.

The Airbase range is so versatile, you will always achieve the best colour match possible and remember that the Blush and Bronze colours are also designed to mix with the Airbase Foundation.

This table gives you tips on how to warm sallow skins, disguise dark circles and camouflage tattoos.

STEP 1: PREPARATION

Colour Mixing Tips

The table below gives some examples of skin tones and the Airbase shades you can mix to achieve perfect colour matches.

SKIN TONE/ TO CONCEAL	FOUNDATION SHADES	ADDITIONAL MIXING	RESULTS
Lilley White	Foundation 00	Mix with 1, 2, 3 or 4	Creates a paler tone
Ivory/Pale Caucasian	Foundation 1	Mix with one drop of Blush 1	Creates a warmer tone
Light/ Medium Caucasian	Foundation 2 or 3	Mix two shades together for perfect match	Creates a colour inbetween shades 2 & 3
Medium/ Dark Caucasian	Foundation 3 or 4	Mix two shades together for perfect match	Creates a colour inbetween shades 3 & 4
Mixed Race/ Afro Caribbean	Foundation 5 or 6	Mix with Foundations 2, 3 or 4	Lightens base shades for a mixed race skin
Asian	Foundation 4	Mix with Bronze	Adds yellowy tones for Asian skins
Oriental Tones	Foundation 4	Mix with Bronze and Foundation 1	Adds yellowy tones and lightens
Afro Caribbean	Foundation 5	Mix with Bronze	Creates a lighter tone
Afro Caribbean	Foundation 6	Mix with Blush 1	Creates a warmer tone
Afro Caribbean	Foundation 6	Mix with Blush 2	Creates a yellower tone
Bronzed Skin	Bronze	Use on face, shoulders, chest or even legs!	Gives a suntan glow used alone



TIP: Larger amounts can be mixed in a medicine cup and dispensed into the airbrush cup.

STEP 1: PREPARATION

Concealing

You can conceal both with Airbase Foundation and with the Airbase Concealer. This is largely down to personal preference and the blemish that you are covering.

Concealing using Airbase Foundation, Blush and Bronze Airbase Foundation provides lightweight coverage and is perfect for freckles and lighter shadows. It can also be used for more pronounced blemishes and can be built up using a foundation brush, or your airbrush as you get more proficient. When using the airbrush to conceal you can 'pulse' away any blemishes on the skin such as pimples. Always use the Airbase Foundation Brush when working under the eyes to prevent spraying the product into the client's eye.



TIP: Apply a very fine application of the foundation a shade lighter than you will use for the full face under the eyes of the client. This creates a light illusion that prevents dark circles.

Concealing Using Airbase Concealer

The Airbase Concealer has enhanced pigment and thicker more traditional concealer formula making it perfect for an initial covering layer for more 'stubborn' complaints such as port wine stains and birthmarks.

TIP: Apply with fingers or a brush. The concealers can be utilised with all airbase colours to customise and cover any type of mark. Having been designed to work with Airbase it can be used under a spray of Airbase or used alone.

When used alone pat or stipple on to the skin and should you wish it can be set with a little powder.

Men

Airbase can be used on both men and women. Even when clean shaven, men may still have a dark shadow that needs concealing. To counteract this blue colour firstly spray with Blush 02 or if using Airbase Concealer with the appropriate colour and then with your colour match foundation.



COMPLIMENTARY COLOURS

STEP 1: PREPARATION

Concealing Tips

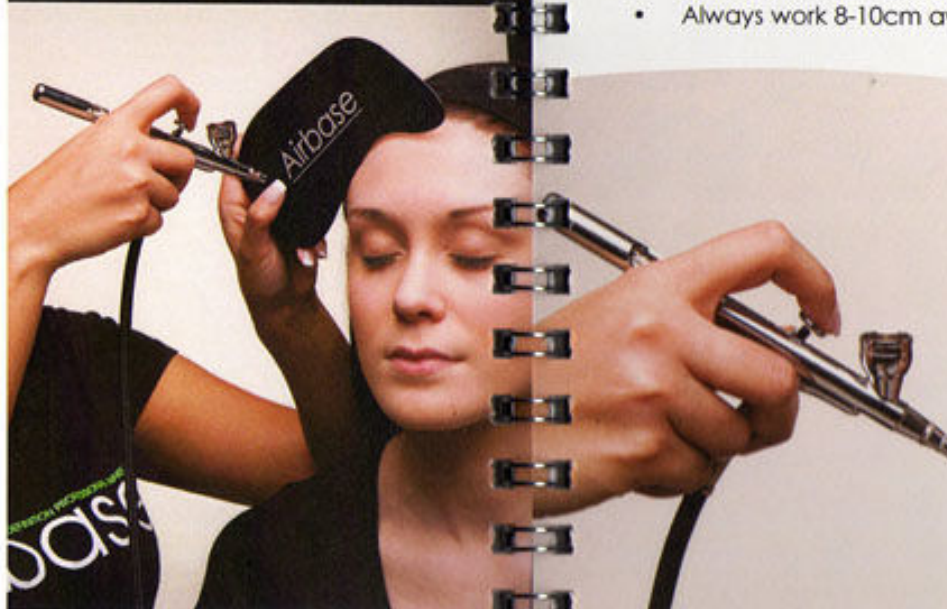
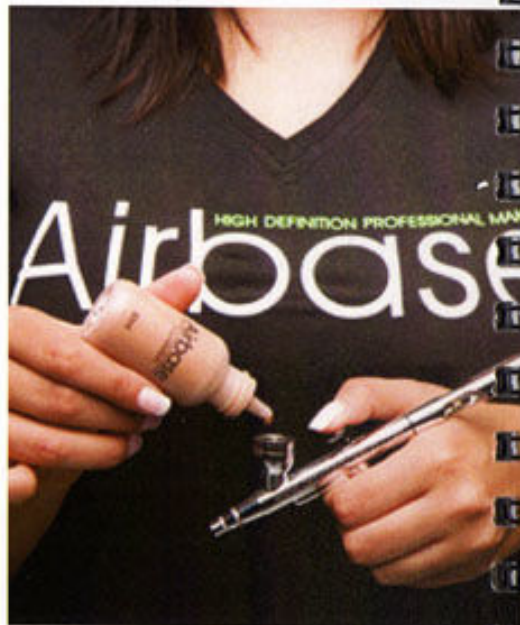
This table gives you tips on how to warm sallow skins, disguise dark circles and camouflage tattoos.

TO CORRECT	CONCEALER OR FOUNDATION / BLUSH	SHADE	ACTION	RESULT
Sallow Skins	Corrector Palette	Lavender	Apply and blend	Warms a sallow skin
Freckles and Beauty Spots	Foundation	Match foundation to skin tone	Use Airbase over area	A light coverage
Spots	Foundation or Concealer	Use colour matched foundation and pulse to cover. Can use concealer for additional cover if required	Blend to cover	Colour corrected
Scars and Birthmarks	Concealer and Foundation	Conceal, powder with HD Matte then colour matched foundation	Conceal then blend in with a fine layer of Airbase	Covered
Broken Veins	Foundation	Colour matched foundation	Draw over veins	Covered
Dark Eye Circles	Concealer or Foundation	Light shadow Use Blush 02 to counteract blue tones Concealer for darker shadows	Apply one shade lighter than matched colour	Creates a light illusion to prevent dark circles
Dark Eye Circles	Corrector Palette	Orange	Apply and blend on dark circles	Neutralises the blue tone
High Redness	Corrector Palette and Foundation	Colour matched foundation. If redness is extreme neutralise the red with green corrector	Apply the foundation or blend in the green prior to foundation application	Masks redness
Bronzed Look	Foundation and Bronze / Blush	Bronze alone or mixed with other base colour. A little blush 1 or 2 can also be mixed in	Use on face, shoulders, chest or even legs!	Gives a suntan glow used alone
Blue Based Tattoos	Blush and Foundation	Blush 2 + powder. Then airbase skin shades in layers with powder between each	Apply over tattoo	To neutralise blue tones
Green based Tattoos	Blush and Foundation	Blush 1 then use as above	Apply over tattoo	Use to neutralise green

STEP 2: SPRAY APPLICATION

Foundation Spray

- Dispense approximately 10-15 drops of the required foundation shade into the Airbrush cup. The amount depends on the coverage required.
- If you are mixing different shades together, be sure to remember how many drops of each shade you require. Refill if necessary to avoid waste.
- Use a cocktail stick to mix the product in the cup. Do not use a cotton bud as fibres can clog the airbrush. Mix products by back bubbling the airbrush by placing a tissue over the nozzle and press down on the trigger; you will see the product mix as it 'back bubbles' into the product.
- Having turned on the compressor, gradually introduce air onto the clients face with just air to allow them to feel the sensation on the skin.
- Working approximately 8-10cm from the skin slowly introduce product. Begin with the forehead shielding the hair using the Airbase Guard (shading pad). If the hair is not pinned back, use this to lift hair out of the way.



TIP:

Be sure to shake each bottle well before use.

STEP 2: SPRAY APPLICATION

- Work down the face using small circular or long sweeping movements, whichever you feel most comfortable with.
- Several fine coats look better than one thick coat so keep the air / product flow moving to ensure an even finish.
- Spray downwards onto the face. This protects the eyes and avoids the lifting of facial hairs.
- When spraying the nose area reduce the pressure by pulling the trigger of the gun back less. Move closer to the skin and work using small circles. Ask your model or client to breath out while spraying under the nose or protect the nostrils with a tissue. Never spray into the nostrils or ears.

In Summary:

- Use circular sweeping movements;
- Always spray down;
- Ask the client to breathe out;
- Reduce the pressure around the nose;
- Shield the hair using the Shading Pad;
- Always work 8-10cm away from the face



TIP:

Ask your model to keep their eyes and mouth closed whilst you are spraying

STEP 2: SPRAY APPLICATION

Bronze Spray Application

- Spray any remaining foundation out of the airbrush onto a tissue and follow with just a couple of drops of Airbase Thinner & Cleaner. You can wipe the sides of the cup with the cleaning brush supplied or gently with a dry tissue.
- Add 6-8 drops of Airbase Bronze into the cup of the airbrush. The Bronze can be mixed with a light foundation shade or replaced with Foundation Number 5 if the colour is too intense for the client or model.
- Spray product through the airbrush into a tissue until the Bronze can be seen to come through in the desired shade.
- Apply lightly to the areas you wish to bronze. As with the foundation, you can use sweeping or circular movements – whichever you find more comfortable.
- Always take the Bronze down to the neck being sure not to leave a noticeable line.

STEP 2: SPRAY APPLICATION

Blush Spray Application

- Spray any remaining Bronze out of the airbrush as you did with the foundation.
- Add 6-8 drops of Airbase Blush to the airbrush cup. Spray the Blush onto a tissue to remove any residue of product previously used (i.e. Bronze or foundation).
- Whilst learning how to apply Blush, spray onto the Shading Pad and ease onto the face. This prevents heavy application, any over spray and application of Blush where you don't want it.
- For perfect placement, apply blusher in line with the centre of the eye, bottom of the nose and work towards the top of the ear
- Always work towards the hairline when applying the Blush.



TIP:

A little Blush in the crease of the eyes or on the forehead gives a glow, and a fine layer of Blush over the face will lift a sallow skin. You can use either shade of Blush - whichever you think is appropriate for your model.



TIP:

The Bronze can be mixed with Foundation 5 for a very dark skin.

STEP 3: FINISHES & TECHNIQUES



Airbrushing is famed for special effects that can be created with it.

Contouring and additional definition is a popular technique to enhance the natural features of individuals. These effects can be achieved following the application of Airbase Blush and Bronze through highlighting and contouring areas.

Highlighting

- To highlight, airbrush one of the Airbase highlighters to the relevant area. The highlighters, in gold and silver can be used directly onto the skin or mixed into any of the Foundation or Blush shades for a more subtle look.
- To highlight without shimmer, add a lighter shade of foundation (than the colour matched shade) to the appropriate area. Typically go two shades lighter or use Foundation 00.
- To accentuate high cheekbones, apply a fine layer of the lighter foundation along the cheekbones, up to the hairline.

Contouring

- We can achieve definition to an area by adding a darker shade of foundation under the area looking to be highlighted.
- To accentuate cheekbones, a light layer of dark foundation under the line of the cheekbone will help to add definition. A foundation shade two shades darker is a good guide.



Gold and Silver
Airbrush Highlighters



TIP: Use under the jaw line to take away a double chin.

STEP 3: FINISHES & TECHNIQUES

Spots and Blemishes

To cover spots and blemishes first conceal (prior to application) with a shade of foundation.

When working on spots, work close to the skin (about 3-4cms away) and 'pulse' away the spot with your airbrush until it is no longer visible.



Tattoo Coverage

Airbase covers tattoos well. To cover tattoos or dark blemishes you first need to colour correct the tattoo. This can be done with the Blush colours. Blush Two is ideal for counteracting a tattoo that has a blue base and Blush One can be used to counteract a green one. Allow each layer to dry thoroughly before moving on. Skin colour match the foundation over the blemish until the tattoo is no longer visible.
(See colour wheel on page 13).



STEP 3: FINISHES & TECHNIQUES

Finishing the Look

Airbase is designed to produce the perfect base for you to add the finishing touches on top of. Apply eye and lip make-up as normal being careful not to lean on the face. If you prefer you can apply the eye make-up before Airbase using the Shading Pad to mask the eyes.

If the customer does not want a full face of make-up and just the base, always apply mascara to define the eyes, as any spray foundation will fall on the tips of the lashes. Gloss the lips to finish.

If foundation has settled too heavily on the eyebrows simply run over them with a cotton bud to remove any excess product.

Eyes, Lips and Powders

Airbase have an expanding range of colour cosmetics which can be used conventionally. The eye shadows are high pigmented, available in Pearl or Satin and can be used wet or dry.

The Lip Glosses are also high in pigment and include bees wax for maximum longevity on the lips. The range of Micro Powders use the finest milled powder which is imperceptible on the skin, making them ideal for High Definition work. Matte, Glow (with a sheen) and Bronze are available.



BEFORE & AFTER



PORT WINE



BRUISING

AIRBASE HINTS & TIPS

Don't Stop Spraying Suddenly

The airbrush may spit product onto the skin and give an uneven finish. To prevent this, when ending application in a certain area slowly pull the gun away from the skin and reduce the pressure of spray by altering the amount you pull the trigger back.

Go Light

Remember that airbrushing is designed to produce a natural look and several light applications are preferable to one heavy thick layer on the skin.

SPF Moisturiser

Airbase can be applied without a layer of moisturiser but on normal skins may be too matt for many clients. As Airbase doesn't contain any SPF protection try and use a moisturiser with an SPF in it.

Have a Foundation Brush Available

Any errors are easily corrected with the sweep of the Airbase Foundation Brush. Do not use fingers or sponge for corrections as this will remove too much product and is difficult to patch. Apply foundation underneath the eyes and over eyelid with the foundation brush prior to starting to spray.

Thick Product

If the foundation is a little thick it can be thinned by adding one or two drops of Airbase Thinner & Cleaner. This method can also be applied to the Blush and Bronze.

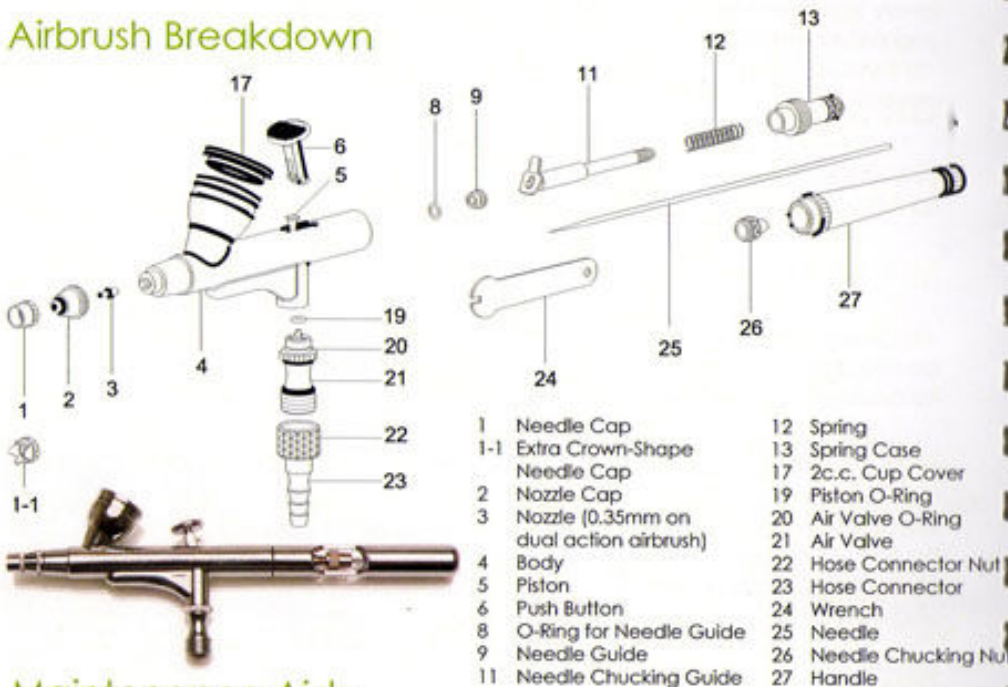
Cleansing Mitt

The Cleansing Mitt is manufactured using fibres over 10 times smaller than a normal mitt. Because of the tiny fibres, when moved across the skin with just warm water, the fibres pick up the make-up from the skin leaving it completely clear - without the need for alcohol.

AIRBASE MAINTENANCE

It is important that you understand your airbrush. A full breakdown of parts is shown on the diagram below (and within the instructions supplied with your airbrush). Remember that no problem with your airbrush is unsolvable. Regular and thorough cleaning of your airbrush will help prevent problems from occurring.

Airbrush Breakdown



Nozzle Size 0.35mm on dual action airbrush.

Maintenance Aids

First Aid Kit

You would never leave home without a spare tyre in your car and the First Aid Kit is your airbrush equivalent. Never leave a bride disappointed and have a replacement needle, replacement nozzle and cleaning brushes with you at all times. The First Aid Kit is also supplied with a tool to remove the nozzle if necessary.



Ultra Sonic Cleaner

The Ultra Sonic Cleaner uses thousands of tiny vibrations to give your airbrush a thorough clean and reaching parts of the airbrush you can't. The machine also cleans jewellery with an appropriate cleaning fluid.



AIRBASE MAINTENANCE

Cleaning

It is extremely important to make sure that you spray your airbrush through with Airbase Thinner & Cleaner after each time you use it - other airbrush cleaners are unlikely to clean the brush effectively due to the high silicone content in Airbase.

- Silicone products need cleaning with a silicone cleaner;
- Water based products use water to clean;
- Alcohol products use alcohol to clean

TIP:

Remember do not use cotton buds for cleaning as the fibres could clog the airbrush. Instead back bubble or use a small brush.

After Each Use

Regular minimal cleaning will prevent you from having to strip, clean and reassemble the airbrush. After each use, spray through any excess product onto a tissue. Put approximately 6-7 drops of Airbrush Thinner & Cleaner into the cup and using the cleaning brush work loose the foundation in the bottom of the cup. Spray the cleaner through the gun remembering to catch the residue in a cleaning pot. Repeat until the cleaner is spraying through clear.

At the End of the Day

Brush the cup of the airbrush with the cleaning brush supplied and airbrush cleaner to leave it looking clean. Spray through all of this cleaner into a cleaning pot and add another 2 or 3 drops to the cup. Remove the needle by loosening the needle chucking nut and wipe over with a clean tissue. Whilst the needle is retracted use the soft brush to clean the nozzle cap of the airbrush. **Never clean the nozzle with needle in place.**

Spray through more Thinner & Cleaner to ensure some cleaning fluid is left in the airbrush. This will prevent clogging of the airbrush overnight or in-between use. Be sure to replace the cap.

The next time you use your airbrush test the spray by blowing through any remaining cleaner. This will also make sure your airgun is in working order before you start spraying your new make-up.



AIRBRUSH TROUBLE SHOOTING

Cleaning your airbrush after each use will keep it in tip-top condition. However, from time to time you may experience one of the following common problems. These problems are often easily solvable.

PROBLEM	LIKELY CAUSE	TO SOLVE
Back Bubbling	Blocked Airbrush	Clean thoroughly - Remove needle, nozzle cap and needle cap. Remove nozzle using wrench spanner and clean all parts with Airbrush Thinner & Cleaner.
Back Bubbling	Nozzle broken and needle protruding beyond the needle cap	Replace nozzle. Replacement nozzles available from Airbase.
Back Bubbling/ Not spraying anything	Needle not moving when trigger pulled back	Ensure needle is positioned correctly and tighten part 26 - Needle Chucking Nut.
Product not Spraying	Blocked Airbrush	Clean thoroughly - Remove needle, nozzle cap and needle cap. Remove nozzle using wrench spanner and clean all parts with Airbrush Thinner & Cleaner.
Product not Spraying but Thinner & Cleaner is	Thick Product	Thin product using Airbase Thinner & Cleaner as directed on bottle.
Air blowing through continuously	Sticky Trigger	Strip down airbrush and clean thoroughly. Remove parts 5, 6 and 19-21 and clean with Airbase Brush Cleaner or pure alcohol. Ensure cleaning product penetrates the piston (part 6) pictured below.



TIP:

A trouble shooting guide to airbrush issues is available under frequently asked questions on our website.



Airbase offers an airbrush service and stocks all airbrush parts.

COMPRESSOR MAINTENANCE

The Compressor

Instructions for your AC-25 Mini Compressor are supplied upon purchase. Below is a diagram of parts supplied:



Setting Up Your Compressor

Connection of your compressor to the power supply is simple. Connect the power supply to the DC power jack making sure the plug socket at the mains is in the 'off' position.

To connect the airbrush, attached the air hose to the air outlet and the other end of the air hose to the air valve of the airbrush (part 21).

Your airbrush and compressor are now ready to use. Switch the power on at the socket. The LED light will illuminate green. Press the red on/off switch and your compressor will switch on. Your compressor sprays at a pressure of 10psi.

Wireless Connection

It is possible that you wish to use your airbrush and compressor when you do not have access to a power socket. This is not uncommon on shoots and sets.

If this is the case, Airbase supply a Wireless Kit that runs off a portable battery set meaning you do not need mains power to run your compressor. Please talk to your trainer about this kit or call 0115 9678691.

HEALTH & SAFETY CHECKLIST

As with any beauty treatment, health and safety is extremely important. Remember to apply all the standard health and safety procedures to Airbase Make-Up application.

The list below is not intended as an extensive and exhaustive list of health and safety requirements, but a quick checklist for some of the more important requirements of health and safety with regards to Airbase Make-Up:

- Check with the client for any contra-indications and allergies;
- Advise any client with any respiratory diseases that the spraying may affect their breathing. Be sure to get their consent before proceeding with the application and if breathing becomes anymore difficult than normal, cease the treatment;
- When spraying Airbase always ensure you have a well ventilated room. If there are no windows make sure a suitable extractor fan is fitted and if necessary leave the door of the room open to allow air to circulate;
- Like any cosmetic product, we recommend that you carry out a patch test at least 24-48 hours before application to the face, either behind the ear or in the crook of the arm;
- Ensure that your compressor is PAT tested annually;
- Do not eat in any areas where airbrushing is being carried out as particles may drop onto food;
- Never spray into the eyes, nose or mouth;
- Never remove the needle cap from the airbrush to expose the needle as this may pierce your client's skin;
- Always work with the compressor on a low level flat hard surface. The vibrations can cause the compressor to move;
- If using Airbase regularly we recommend the make-up artist wears a face mask.

QUESTION & ANSWERS

How did Airbase begin?

Airbase was created by Judy Naaké, the lady that brought St. Tropez to the UK with product development by Oscar nominated make-up artist Ann Buchanan.

Why silicone?

Silicone feels beautiful and luxurious on the skin and allows the skin to breathe as it will not clog pores. It also gives make-up amazing durability. Silicone is heat-resistant, non-stick and rubber like. All three of these properties are useful in make-up. It is the heat resistance that makes silicone make-ups so popular in the world of TV and film as they stand up to the intense heat of the lights. Due to the formulation of Airbase, this professional make-up is ideal for both special occasions such as weddings and everyday wear.

What are key ingredients to help sell the product?

As well as silicone, the benefits of which are detailed above, Airbase also contains Vitamin A, an ingredient that is proven to improve elasticity of the skin and therefore reduce fine lines. It also contains Vitamin E. This is an anti-oxidant that moisturises and repairs helping to deactivate the free radicals that age the skin.

Why do we spray Airbase using an airbrush?

When you spray using an airbrush it atomises product making the particles of make-up tiny. This is why airbrush make-up is used in HD TV and film. The particles in the make-up become much smaller than when it is conventionally applied and therefore less visible. HD TV picks up absolutely every imperfection! There is also hygiene benefits to spraying. When we use a brush or hands there is potential to spread bacteria and germs across the face. By spraying Airbase make-up onto the face we can avoid this.

Why do we not put Airbase in a can?

Spray make-ups in atomisers similar to deodorants are a great idea in theory. However, in reality there are practical problems. The nozzles can block meaning the product does not come out at all and 'spitting' prevents the application being flawless.

How is its staying power?

The silicone makes Airbase incredibly long lasting and waterproof. As silicone is heat resistant you don't get shine through as you can with water or oil based make-ups. Airbase really does last all day - even in blizzard conditions! Topping up is a thing of the past!

How do you mix the product and why?

We mix the product to get the exact skin tone. By mixing the foundations you will achieve the shade. Is it easy to do, just test on the clients / models face.

QUESTION & ANSWERS

How much product do you use?

10-15 drops of foundation will be sufficient, although it's completely dependant on coverage required. Therefore 30ml of product goes a long way! You can mix the product in the cup either by back bubbling with a tissue over the nozzle with the cap on, or by mixing with a cocktail stick. Make sure that you shake the make-up bottles extremely well before use with the cap tightly screwed on.

Can you apply with fingers or Foundation Brush at home?

Yes, you can apply with your fingers or our Foundation Brush and it will give a fantastic finish. You can use Airbase like any other make-up. However, for the ultimate look, application through the airbrush is preferable as it gives an extremely fine application that allows coverage to be achieved by building several fine layers; therefore looking natural while getting good coverage. Home use Airbrushes and Compressors are available.

What else will Airbase cover?

Acne, scarring, tattoos, birthmarks?

Airbase is absolutely fantastic for the covering of acne, scarring, rosacea, port wine stains and spots while still looking natural. It also covers tattoos.

Does anyone we know use Airbase?

Airbase is sold to thousands of make-up artists throughout Europe and the Rest of the World and is used on celebrities, brides, leading cast members and extras on TV, Film and Stage productions. Make-up artists on productions including Coronation Street, Shrek the Musical and Rock of Ages have enjoyed using Airbase for its longevity and Julia Carta selected Airbase to perform for X Factor due to its ability to stand up to the intensity of studio lights and its water resistance. SKY TV and ITV both regularly use Airbase in their productions and it was chosen for the film Life of Pi due to its ability to stand up to humid conditions. We can also be credited with turning Rihanna's skin white in her 'You Da One' video.

How do you remove Airbase?

As it is so long lasting, Airbase won't just come off, but it is easy to remove. You can use standard make-up remover wipes or cleanser. However, we recommend the Microfibre Cleansing Mitt. This is reusable and you only need warm water. It is therefore kind to both your skin (less drying than alcohol based wipes) and the environment (it can be washed in the washing machine at 50°).

PRODUCT KNOWLEDGE TEST

NAME: _____

COLLEGE/SALON: _____

ONE: WHAT INGREDIENT IS USED IN THE BASE OF AIRBASE?

TWO: HOW MANY SHADES ARE THERE IN EACH OF THE FOLLOWING PRODUCT?

i. Foundation _____ ii. Blush _____ iii. Bronze _____

THREE: GIVE ONE REASON WHY SILICONE IS USED IN MAKE-UP

FOUR: UNDERLINE ALL OF THE FOLLOWING STATEMENTS THAT ARE TRUE TO AIRBASE:

- i. The atomisation of the product makes the particles very small
- ii. It is suitable for High Definition TV and Film work
- iii. It is difficult to correct
- iv. It takes longer than traditional make-up application methods
- v. It is extremely long lasting

FIVE A: WHAT PRESSURE SHOULD WE SPRAY AIRBASE AT (PSI)?

FIVE B: WHAT SIZE IS THE NOZZLE (PLEASE CIRCLE)?

- i. 0.35mm
- ii. 0.75mm
- iii. 1mm

SIX: WHAT DOES THE PRIME DO?

SEVEN: GIVE ONE REASON WHY PLATINUM IS USED IN THE PERFECTING PRIMER

EIGHT: APPROXIMATELY HOW FAR FROM THE FACE SHOULD YOU WORK WHEN SPRAYING?

NINE: WHICH FOUNDATION SHADE IS USED TO HELP HIGHLIGHT AN AREA?

TEN: BLUSHER SHOULD BE APPLIED IN LINE WITH WHAT?

ELEVEN: TRUE OR FALSE - COTTON BUDS ARE GREAT FOR CLEANING AN AIRBRUSH?

TWELVE: TRUE OR FALSE - YOU ONLY NEED USE WATER WITH CLEANSING MITT?